

STEM

STEM Show 7
A solo presentation
by Dionisius Caraka

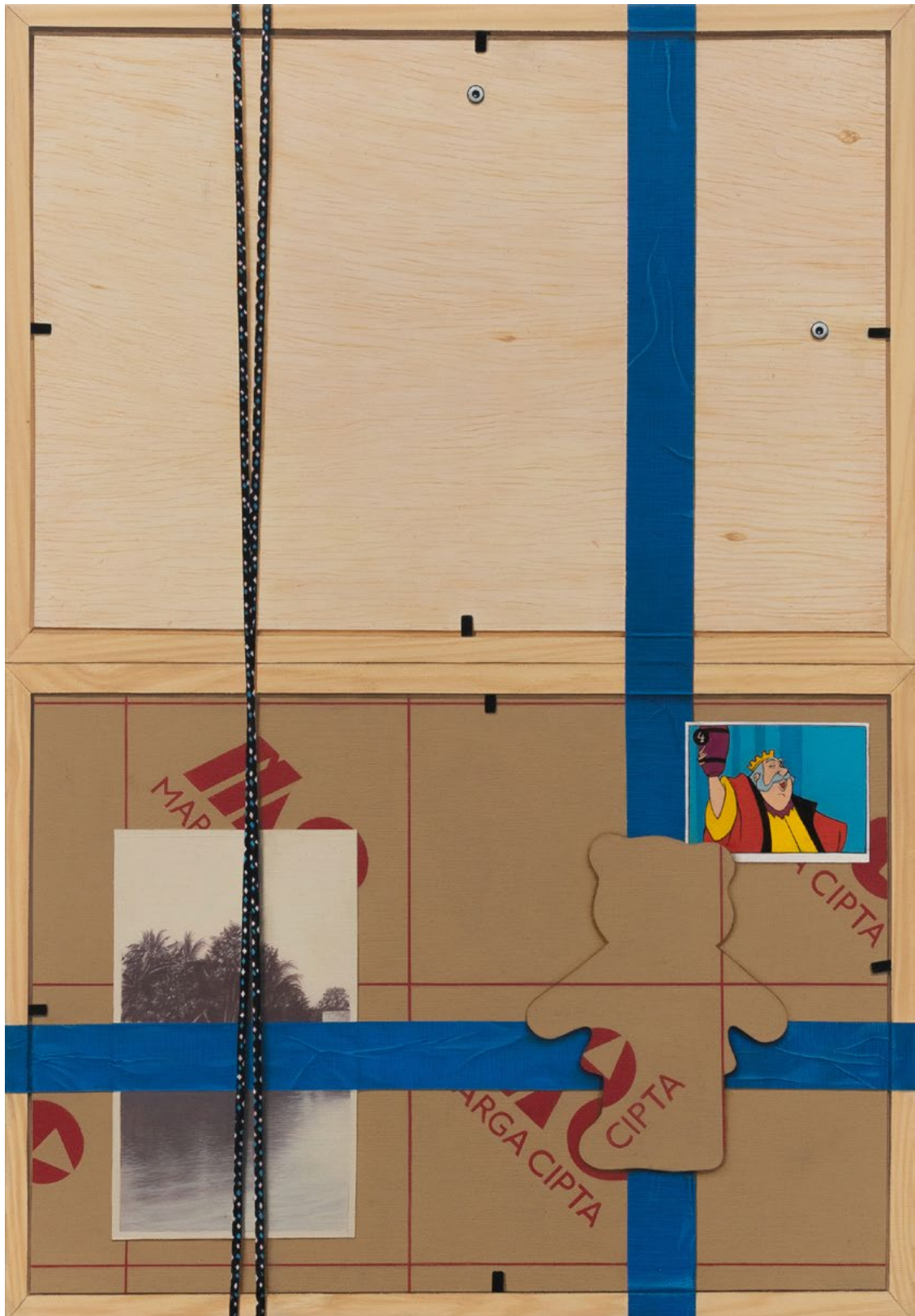
6 Dec 2025
-
18 Jan 2026

Adytria Negara
Kareem Soenharjo

Young Kim
Yosefa Aulia
Zita Nuella

STEM Show 7

STEM Show is a series of exhibitions that gives artists the opportunity, support, and freedom to showcase their practice. The program values growth and creates space for engagement between artists, their works, and the public. Through visibility and appreciation, the show encourages the artists' ongoing development within a wider artistic landscape.



Adytia Negara

The Reverse of Things: Wooden Frames, Laser-Cut Acrylic Sheets,
Hinges, Photograph, Picture Card Sheet, Masking Tape, Prusik Cord
2025
Oil on canvas
47 x 32.5 cm



Adytia Negara

The Reverse of Things: Wooden Storage Boxes, Laser-Cut Acrylic
 Sheets, Hinges, Picture Card Sheet, Prusik Cord
 2025
 Oil on canvas
 28 x 12 cm



Young Kim

Mnemotaxis
2025
Oil on linen
182 x 137 cm



Young Kim

Between the Sky and Earth
2025
Oil on linen
137 x 110 cm



Young Kim

Watching You Leave
2025
Oil on linen
103 x 77 cm



Young Kim

When the Road Freezes Over
2025
Oil on linen
77 x 58 cm



Young Kim

A Forest, the Road
2025
Oil on paper
28 x 21 cm



Young Kim

Bathing Man
2023
Oil pastel and graphite on paper
28 x 22.7 cm



Young Kim

Forced Celebration
2025
Oil on paper
21.7 x 22.7 cm



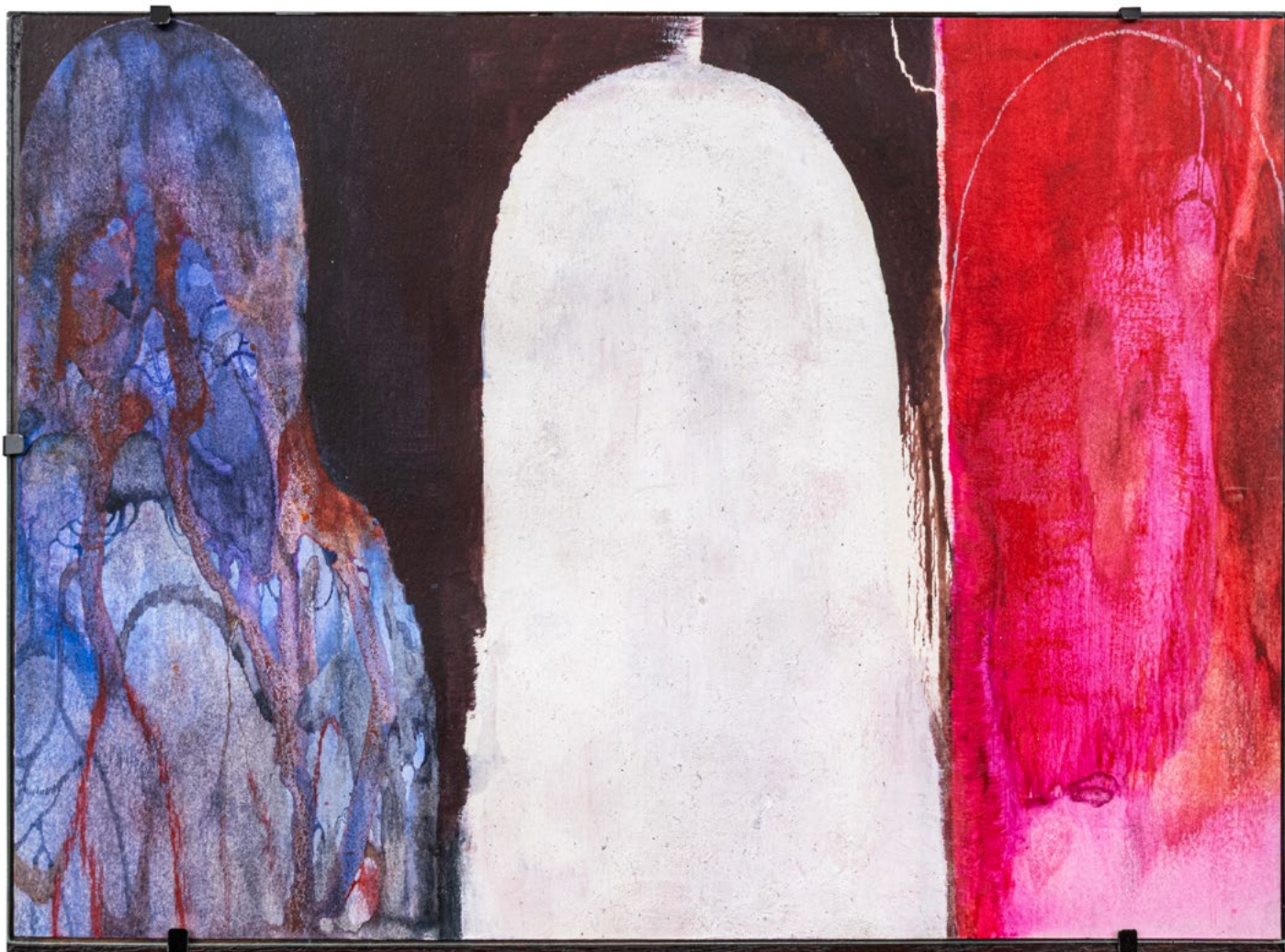
Young Kim

Father and Son Bathing on a Sunday Morning
2025
Oil on paper
23 x 31 cm



Kareem Soenharjo

Dreams Like Lead Osmosis
2025
Oil and watercolor on linen, wood
45 x 50 cm



Kareem Soenharjo

Kekal
2025
Acrylic and watercolor on 220gsm paper
21x29.7 cm



Kareem Soenharjo

Performance
2025

Acrylic and watercolor on 220gsm paper
21 x 29.7 cm



Kareem Soenharjo

Crabs in a Bucket (Karyawan Makan Karyawan)
2025
Acrylic and watercolor on 220gsm paper
21x29.7 cm



Yosefa Aulia

Nautilidae
2025
Oil on canvas
30 x 30 cm



Yosefa Aulia

Duck
2025
Oil on canvas
15 x 15 cm



Yosefa Aulia

Cornea
2025
Oil on canvas
13 x 18 cm



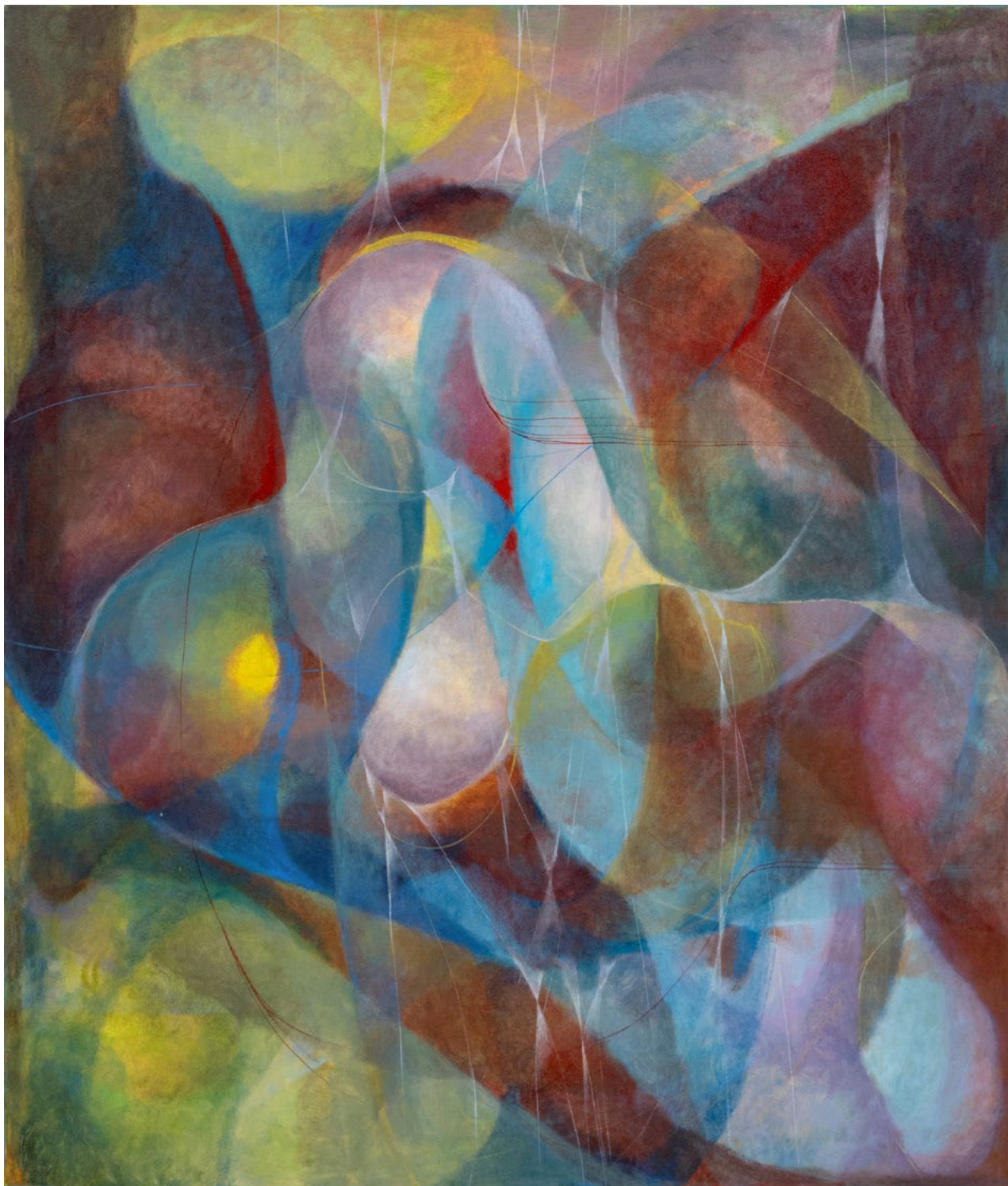
Yosefa Aulia

Creeper
2025
Oil on canvas
15 x 15 cm



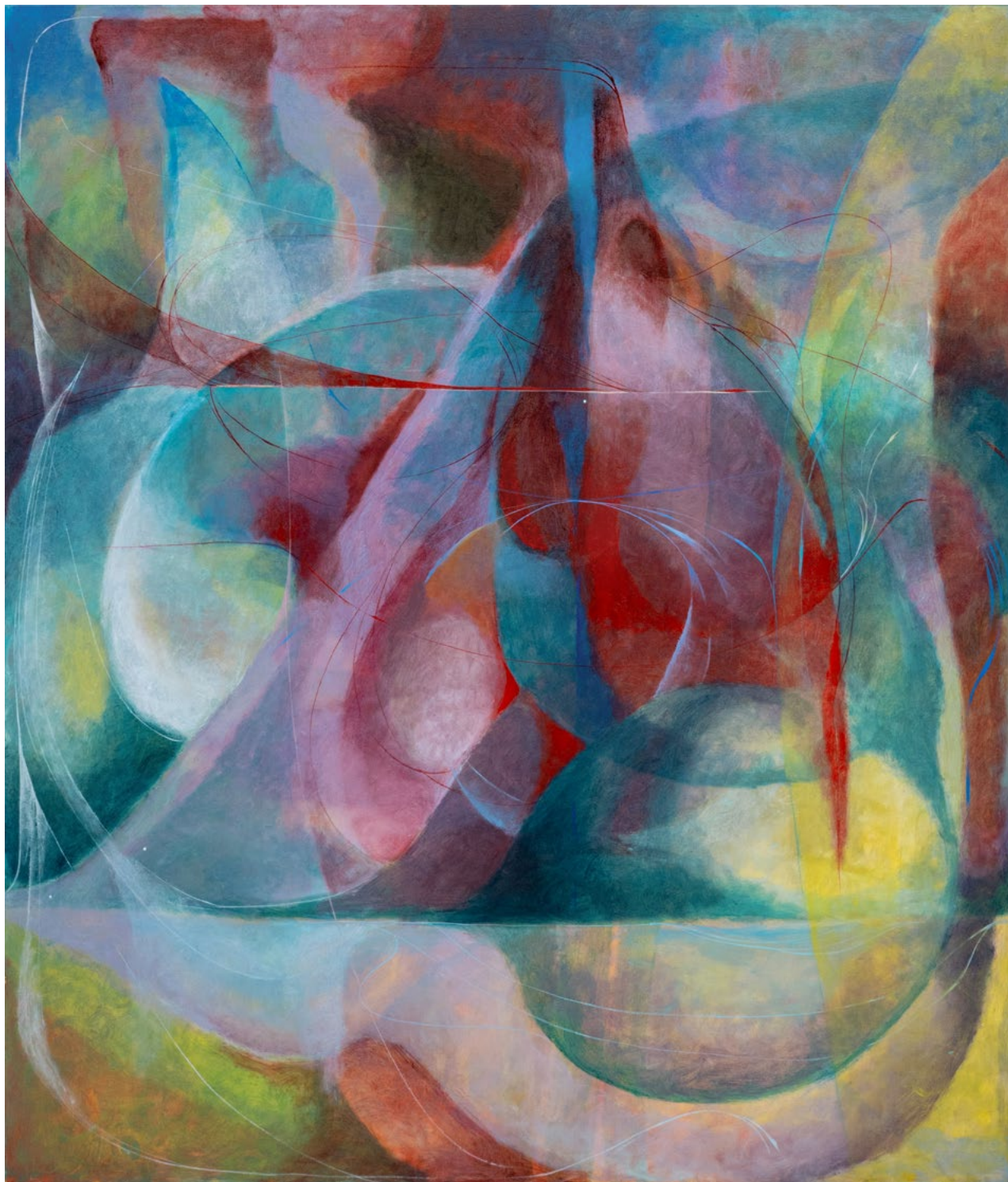
Yosefa Aulia

Earwax
2025
Oil on canvas
13 x 18 cm



Zita Nuella

I, Sea, Eye
2025
Oil on canvas
100 x 85 cm



Zita Nuella

The Moon the Sea Remembered
2025
Oil on canvas
100 x 85 cm

CVs

Adyttria Negara

Adyttria Negara (b. 1995, Jakarta) explores the possibilities of two-dimensional form through painting, focusing on the subtle interplay between depiction, perception, and material presence. By rendering carefully arranged everyday objects with precision and realism, he reconsiders the boundary between what is seen and what is understood—between an image's surface and the reality it suggests. His practice opens a space to question the moment when a depiction stops representing and begins becoming, tracing how perception, illusion, and materiality shape our experience of the world of objects.

Kareem Soenharjo

(b. 1996, Jakarta) is a multidisciplinary artist who has dedicated his life to making unapologetic and honest works in the realms of visual and sonic art. His works encompass a vast life-long journey that delves into existence, memory, sentimentality, and humanity. Wandering within a world where it is necessary to create meaning through the human spirit and faults. For Kareem, the exercise of observing his existence begins with a confrontation with the self. Art, then, becomes an opening, allowing his entry into the terrains of the unknown. Through drawings and paintings, Kareem finds himself engaging in spaces that are outside of time and yet also tethered by reality. He is discomforted by it, but answers and follows the intangibility of it all, carving a path to make it tangible, therefore personifying the dissonance with himself, the world, and the invisible forces that reign over his everyday life.

Young Kim

Alex Young Kim (b. 1988, New York) is a painter whose work moves between memory, perception, and the act of staying with uncertainty. Having lived between Korea, the United States, and now Indonesia, his paintings often emerge from the spaces between familiarity and estrangement—where remembered scenes begin to dissolve into something newly seen. Working primarily on raw linen, Kim allows the surface to hold the record of his process: accumulations, erasures, revisions, bleeds, and traces of time spent looking. His practice centers on painting as a way of registering experience rather than depicting it—each work unfolding through cycles of doubt, unlearning, and rediscovery. He currently lives and works in Jakarta.

Yosefa Aulia

Yosefa Aulia (born 1991, Palembang, Indonesia) completed her studies at the Sculpture Studio, Faculty of Fine Arts, Bandung Institute of Technology in 2014. Her artistic practice explores the body's resistance to life within inherited structures—family, patriarchy, and symbolism—through processes of corrosion, attachment, and gentle rebellion. Using mediums such as oil paint, pigment markers, ceramics, wax, fabric, and various domestic materials, she constructs an intimate series that moves between love and decay. Her works often re-present a fragile negotiation between care and division—a reflection of human resilience itself.

Zita Nuella

Zita Nuella (b. 1998, Bandung) work explores the tension between the self and perception—how we absorb the world, and how the world, in turn, reshapes us. She often places herself in deliberately unfamiliar or destabilizing states to uncover new ways of seeing. For Zita, identity is not a single triumph but a continuous layering—something that can be erased, transformed, and reconfigured over time. Her paintings trace these shifting thresholds, where fragility and survival coexist. She rarely names these moments, yet instinctively refers to them as “intimate universals”—experiences that feel personal, but are quietly shared. Rather than offering resolution, her work creates space for recognition: an invitation for viewers to encounter their own subtle transformations.

STEM

STEM Projects was established with the main purpose of discovering and nurturing emerging and under-represented artists

With an artist-focused approach at our core, we intend to create a platform that enables artists to gain the necessary level of support in the early stage of their careers, while encouraging them to explore their practices and create new works.

Through our programs and activities, STEM places an emphasis on the need for accessibility and engagement between art and people, where we provide the environment that urges the interaction between both; a place for artists to introduce their works to wider audiences.

STEM

Inquiries:

Benedicto Audi Jericho
+62 812 8640 0839
benedicto.srisasanti@gmail.com

Press and Opportunities:

Georgius Christian Amadeo
+62 878 2309 1999
amadeo.srisasanti@gmail.com

[Website & Social Media](#)